

MAJOR FREQUENCY ONE

Milliken[™]

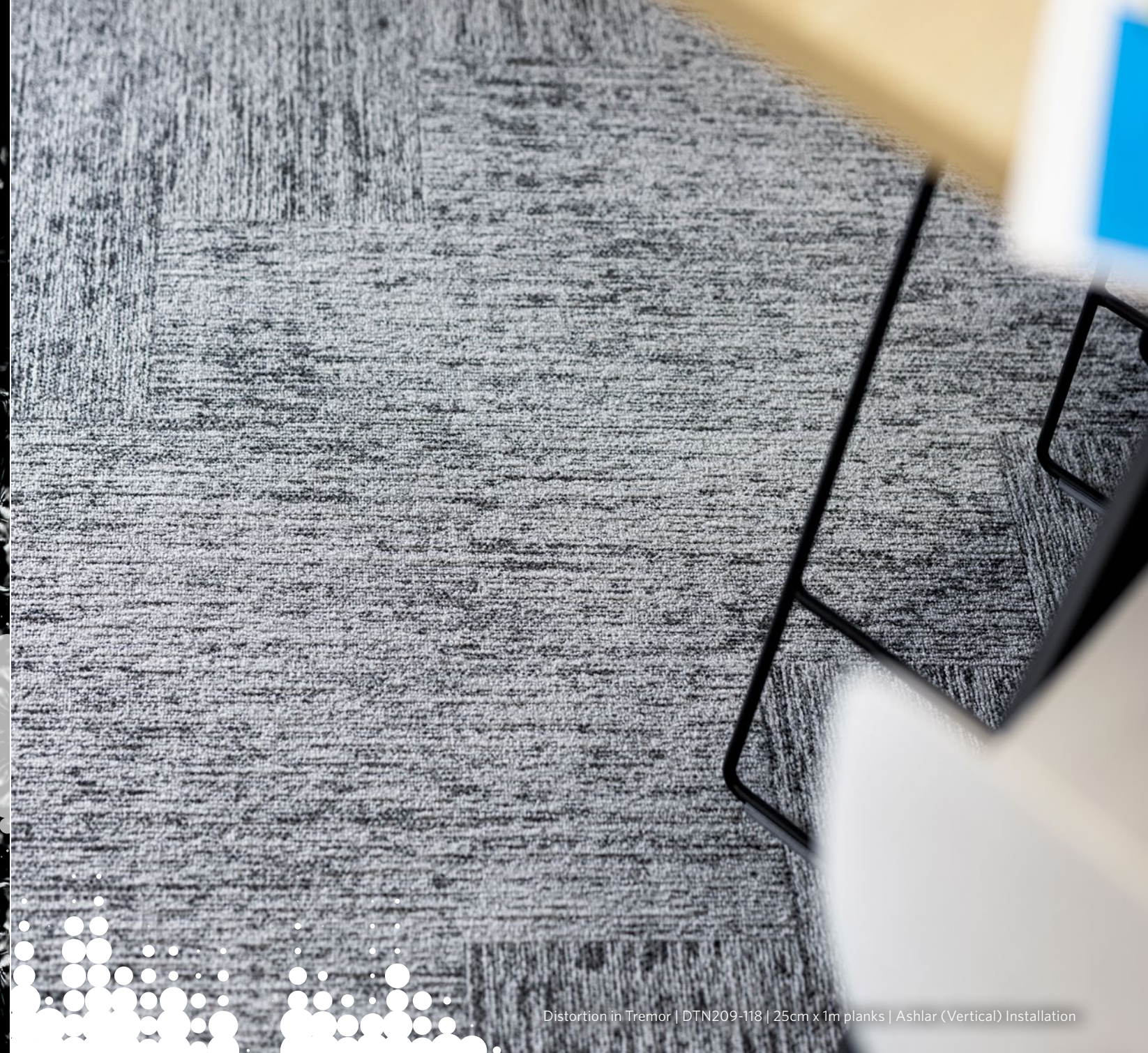




THE VISUALISATION OF SOUND

VIBRATION

DISTORTION



Distortion in Tremor | DTN209-118 | 25cm x 1m planks | Ashlar (Vertical) Installation

Sound can beckon to the core of our emotions. What begins as a singular wave can multiply and curiously sync together, eventually inciting a poignant experience within each of us.

Introducing Major Frequency: One, the first wave in a series of inspiration rooted in the realisation of sound's power. Through two organic patterns expressed in 17 unhindered colour options, this collection explores the possibilities that exist within raw and unencumbered cymatics.

MAJOR FREQUENCY: ONE

VIBRATION

Stippled and robust, Vibration harnesses a finer, more saturated vitality

DISTORTION

A second perspective, Distortion expresses a slightly larger, yet more diluted flow within positive and negative space.





United Workers Union Head Office, South Australia | Liquid Design and True Projects
Photographer: Sweet Lime Photography
Vibration in Tremor | VBN209-118 | Herringbone Installation



135 King Street, Sydney, New South Wales | Greenbox Architecture, Investa, Forge Venture | Photographer: Steve Brown
Vibration in Tremor | VBN209-118 | Ashlar (Vertical) Installation



Ultimate Security Head Office, New South Wales | Inspired Spaces | Photographer: Sebastian Mrugalski
Left: Creo in Sao Paolo | Rua Field - 01103962 | 1m x 1m | Monolithic Installation
Right: Major Frequency: One | Distortion in Static | DTN27-118 | Ashlar (Vertical) Installation



Ultimate Security Head Office, New South Wales | Inspired Spaces | Photographer: Sebastian Mrugalski
Top: Creo in Sao Paolo | Beco Field E - 01103594 | 1m x 1m | Monolithic Installation
Bottom: Major Frequency: One | Distortion in Static | DTN27-118 | Ashlar (Vertical) Installation



Ultimate Security Head Office, New South Wales | Inspired Spaces | Photographer: Sebastian Mrugalski
Distortion in Static | DTN27-118 | Ashlar (Vertical) Installation



Top to Bottom: Distortion in Rustle (DTN141-79-209) and Quake (DTN141-118-106) | 25cm x 1m planks | Ashlar (Vertical) Installation



Red Cross Head Office, South Australia | Liquid Design & JDV Projects | Photographer: Sweet Lime Photography
Top to Bottom: Clerkenwell in Three Corners, London Spy (THC158-157-73) and
Major Frequency: One in Distortion, Tremour (DTN209-118) | Monolithic Herringbone Installation Respectively



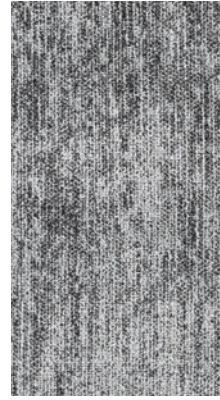
Red Cross Head Office, South Australia | Liquid Design & JDV Projects | Photographer: Sweet Lime Photography
Distortion in Tremour | DTN209-118 | Herringbone Installation



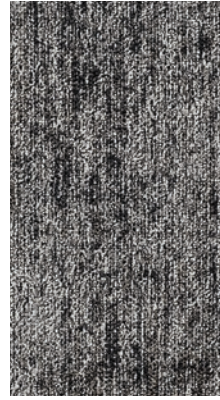


Vibration in Strident (VBN79-152) | Ashlar (Vertical) Installation

Perks Head Office, South Australia | IA Design & Shape | Photographer: Brad Griffin
Left to Right: Distortion in Strident (DTN79-152) and Tremor (DTN209-118) | Ashlar (Vertical) Installation



VBN209-118
TREMOR



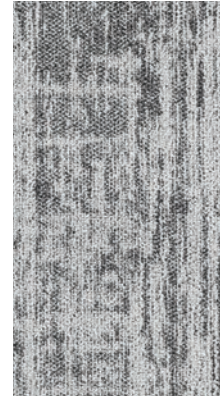
VBN94-27-217
BUZZ



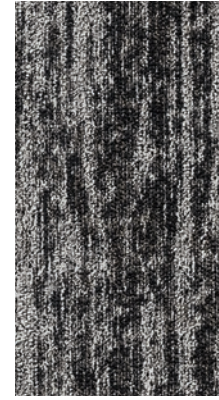
VBN218-106
PERCEIVE



VBN94-211-212
CRESCENDO



DTN209-118
TREMOR



DTN94-27-217
BUZZ



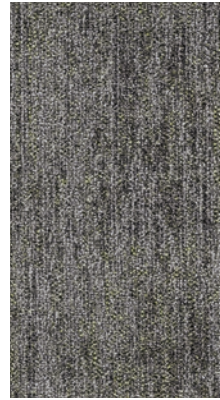
DTN218-106
PERCEIVE



DTN94-211-212
CRESCENDO



VBN79-152
STRIDENT



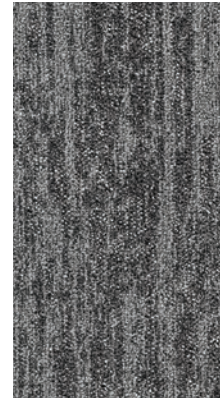
VBN141-118-106
QUAKE



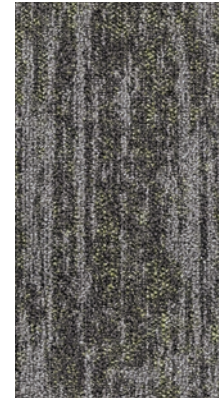
VBN211-106
WAVER



VBN211-27-217
OVERTONE



DTN79-152
STRIDENT



DTN141-118-106
QUAKE



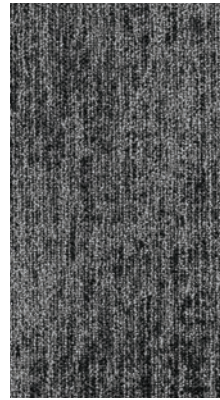
DTN211-106
WAVER



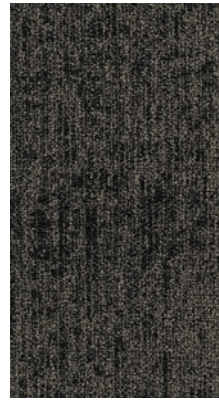
DTN211-27-217
OVERTONE



VBN183-118-152
INTERFERENCE



VBN27-152
FLUX



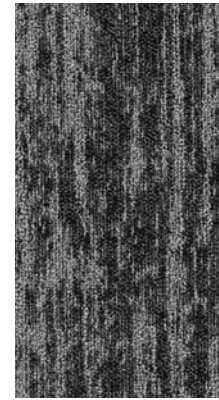
VBN27-67
DISRUPT



VBN190-79-152
CLAMOR



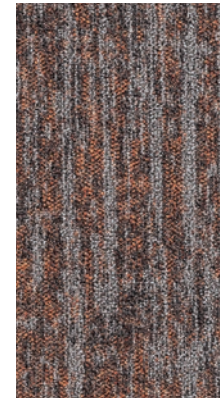
DTN183-118-152
INTERFERENCE



DTN27-152
FLUX



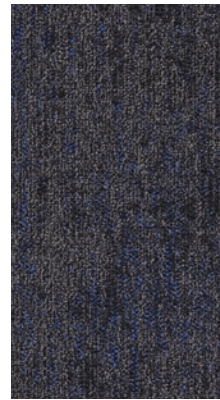
DTN27-67
DISRUPT



DTN190-79-152
CLAMOR



VBN141-79-209
RUSTLE



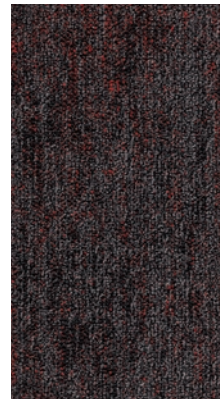
VBN183-27-118
ROUSE



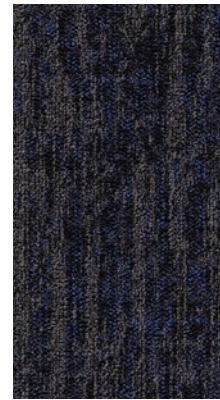
VBN27-118
STATIC



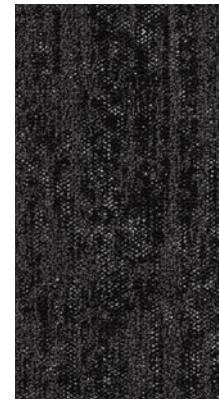
VBN212-27
TRILL



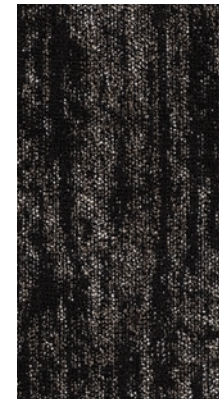
VBN60-79-27
RUCKUS



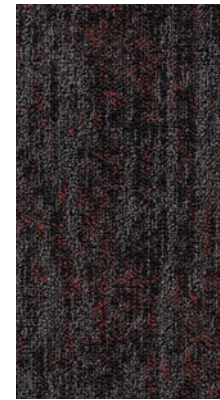
DTN183-27-118
ROUSE



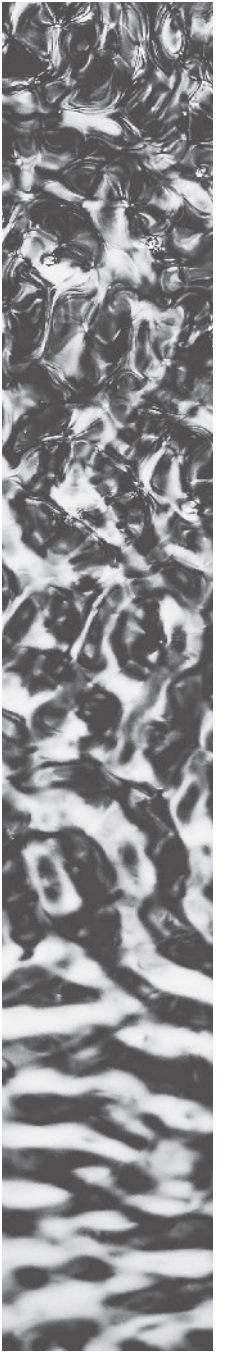
DTN27-118
STATIC



DTN212-27
TRILL



DTN60-79-27
RUCKUS



DTN141-79-209
RUSTLE

STYLE BACKED BY PERFORMANCE

Milliken Floor Covering offers products and expertise in all areas of your commercial spaces, including high-performance entryway systems and modular carpet. Simplify your flooring projects by working with a trusted partner that lets you focus on enjoying the process of creating a great space.



Complete Performance and Support

ENTRANCE FLOOR SYSTEMS

Great architecture and design aren't just about managing all that goes into an effective, attractive space. It's also about what's intentionally kept out. That's why the entrance flooring experts at Milliken created OBEX™, a comprehensive entrance system with a range of proven forms and materials. OBEX equips architects, engineers and specifiers with all they need to create site-specific, high-performing entries, without compromising their project's overall design.

MODULAR CARPET

Milliken WellBAC® carpet tile incorporate the latest innovations in tufting and dyeing technology, achieving unique looks and excellent performance. All carpet tile products have cushion backing for an extended lifespan, as well as ergonomic and environmental benefits.



WARRANTY

Our products are backed by lifetime commercial warranties that ensure quality and give peace of mind. Milliken stands behind its products in the areas of Face Fiber Wear, Staining/Soiling Resistance, Colour Pattern Permanency, Delamination of Backing, Edge Ravel, Tuft Bind, Floor Compatibility, Antistatic, Flammability, Cushion Resiliency, Dimensional Stability, Floor Release, TractionBack and Moisture Resistance.



SUSTAINABILITY

Core to our culture, we embrace sustainability with practices such as third party voluntary product labeling and certifications, zero waste to landfill since 1992, use of renewable energy, product life cycle assessments, ISO 9000 quality standards and all of our manufacturing sites are certified to the highest global environmental standard - ISO 14001 certified.



STAINSMART®

StainSmart, a proprietary treatment applied to Milliken carpets designed to repel and protect against stains and enhance soil release.



MOISTURE MANAGEMENT

Milliken modular carpet is a moisture mitigation solution all by itself. Unlike with hardback products, water vapor has a way to escape from beneath Milliken's cushion backing. It travels freely through our open-cell cushion, evaporating naturally through seams at the edges of each carpet tile. All modular carpet tiles come with a lifetime warranty against adhesive breakdown due to moisture vapor emissions.



WELLBAC® CUSHION

WellBAC® cushion provides superior underfoot comfort while improving the carpet's durability and offering ergonomic, acoustic and environmental benefits.



SIT TO STAND

Avoid the hassle and expense of using anti-fatigue mats under sit-to-stand workstations. Milliken cushion backed carpet tiles have ergonomics built directly into the carpet tiles themselves.



TRACTIONBACK®

Our bio-based, high-friction coating keeps carpet tiles securely in-place without additional adhesives, eliminating the need to prime or seal the floor, thereby reducing installation time and costs.



MAJOR FREQUENCY: ONE

Distortion | Vibration

SPECIFICATION



When you choose M/PACT™ products, you can be sure your choice is carbon neutral. M/PACT™ carbon neutral products offset the raw materials and manufacturing carbon footprint* by using 3rd party Verified Carbon Standard Credits that support renewable energy and carbon reduction technologies to help fight climate change.
*as calculated and verified through a ISO14025/ISO14040 compliant LCA and published in third party EPD.

Standard Backing	WellBAC® Comfort (PVC FREE) (Non-Reactive Backing)
Acoustic Value	Noise Reduction Coefficient - NRC ≥ 0.25 Impact Sound Pressure Level - Ln,w ≤ 47dB
Concrete Slab Moisture Mitigation	Site-Related Solutions (SRS). Milliken Cushion backed tile + Non-Reactive Standard adhesive means installation 60 days after a new concrete pour, fully warranted no moisture testing required. Refer millikenfloors.com.au

Construction	Tufted, Textured Loop	Lightfastness (AATCC 16E)	≥ 4.0 at 80 Hours
Tile Size	25cm x 100cm	Static Electricity	≤ 3.5KV
Yarn Type	100% Solution Dyed Nylon	(AATCC-134) 20% R.H., 70°F	
Stain Resist Soil Release	Built-In Protection	Indoor Air Quality	≤ 0.5mg/m³ (GLP100130)
Dye Method	Solution Dyed	CRI Green Label Plus™	
Gauge	1/12	VOC	Pass (ISO 10580:2010)
Stitches Per Inch	9.5	ACCS Grading	Commercial Extra Heavy Duty & Stairs (CEHD(S) 4*, REHD(S) 6*)
Tufts	114/in² (1,766/100cm²)	Environmental	ECS Grading - Level 4 (Certificate No. 20079)
Recyclable	100%		Declare - 3rd Party Verified RED LIST FREE
Nominal Total Thickness	8.8mm		Cradle to Cradle - Silver
Nominal Total Weight	92.5 oz/yd² (3,130 g/m²)		Carbon Neutral
Nominal Pile Thickness	2.8mm		Environmental Product Declaration (EPD)
Flammability (Radiant Panel Test)	CHF/CRF = 5.8kW/m², Smoke value = 211%.min		Health Product Declaration (HPD)

Recommended Installation Method(s)	All Plank Methods
Recommended Area of Use	Commercial Extra Heavy Duty and Stairs
Warranties	15-year Wear Warranty 15-year Dimensional Stability Warranty 15-year Anti-Static Warranty 15-year Castor Chair Wear Warranty



Alliance
Founding
Member



Milliken

Red Cross Head Office, South Australia | Liquid Design & IDV Projects | Photographer: Sweet Lime Photography
Distortion in Tremor | DTN209-118 | Herringbone Installation

Australia:
Toll Free: 1800 668 372
New Zealand:
Toll Free: 0800 668 372
www.millikenfloors.com.au
(Australia & New Zealand)

This WellBAC® cushion-back carpet tile product is covered by one or more patents, published applications and/ or patents pending. Specifications are subject to normal manufacturing tolerances and may be changed without prior notice. Copies of actual test results are available upon request.